

VISION 2030

Summit Baptist
Church

WHY HAVE A VISION?

A church needs a vision because it sets **direction** and **guides ministry decisions, sustains ministry, motivates** those that are a part of the congregation, **brings meaning**, and **energizes the growth** of the church.

A clear vision creates a sense of direction and encourages unity, purpose, fosters prayerful risk taking, enhances leadership and promotes excellence.

Vision helps churches to reach their full potential by dreaming bigger than their memories and contemplating the future.

SURVEY RESULTS

<u>Question</u>	<u>Result</u>	<u>Percentage</u>
Move Education Center Downstairs	47	90.4%
Create Storage	0	0%
Create Open Space	1	1.9%
Other	4	7.7%
Total	52	

BASEMENT PROJECT



Rational

- Space available would increase from 32 children to approximately 75-88 children
 - This will provide a larger need for employment in the area (which is a positive to Wiggins).
- Increase impact to the community
 - The more we help the community the more our influence on the community becomes
- Increase Christian influence on younger children
 - This will increase the number of children that hear the gospel on a regularly basis.

BASEMENT PROJECT



Rational

- Increase outreach to parents
 - The goal for the SEEC moving into a new phase of reaching and doing more to outreach to parents.
- Increase financial stability for SEEC and Church by increasing income
 - Currently SEEC is “Tithing” \$1500 - \$1800
 - Yearly \$18,000 - \$21,600
 - Potential at Full Capacity \$4125 - \$4950
 - Potential Yearly \$49,500 - \$59,400

EDUCATION CENTER PROJECT

Potential Process for construction

- Estimate will be given by Complete Services
- We will break it up in phases...(projected 5 phases)
 - Example:
 - Phase 1: Permits, Electrical and Plumbing work
 - Phase 2: HVAC, Framing work

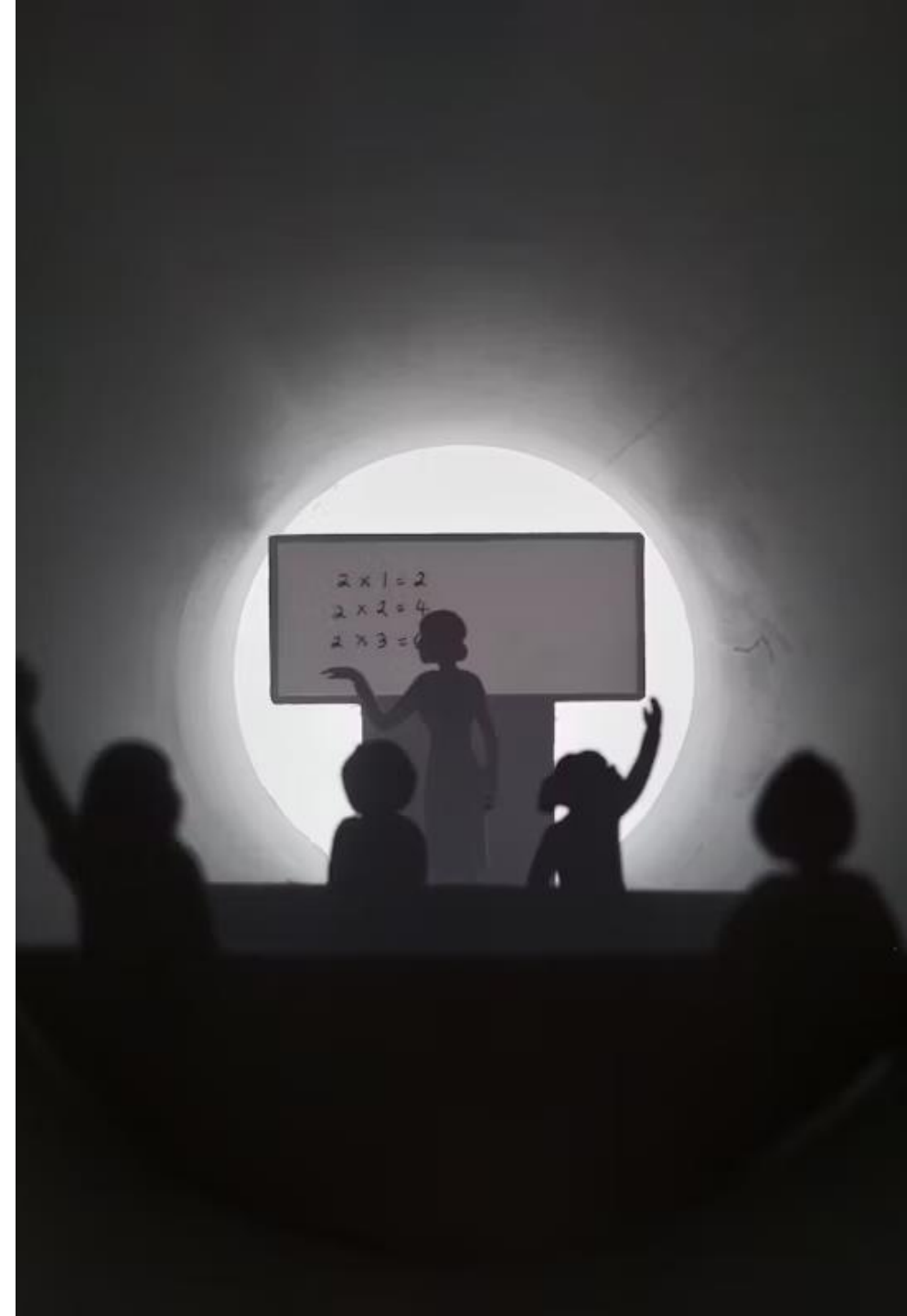
Potential options for payment

- Grant to help with project (SEEC, State Convention, ect.)
- Building Funding
- If raising funds becomes an issue, we can re-evaluate

SUNDAY CLASS REORGANIZATION

Add two additional classes to Sunday morning

- One Adult class and College age class
- With the growth of both of our adult classes we need to expand.
- College age individuals is a gap in our Sunday School coverage
 - Need Two Teachers
- Increase promotion
 - Our classes need to be promoted within our church and outside our church
 - We have a unique opportunity to tell people what we are teaching and the classes we offer.



LIFE GROUPS PROMOTION AND GROWTH

Advertisement and support to life groups in a larger way

- Financial if needed
- Facilities if needed
- Promotions
- Opportunities
- Topics or otherwise

Reminder this is a church sponsored event and needs to abide by church policies.



CHURCH PLANTING & SUMMIT



Start supporting a church plant in Colorado...

- Support financially
 - Perhaps \$100 a month to start
- Through regular pray
- Increase financial support as it seems possible
- Increase number of church plants that we support as it seems possible

2nd Phase Become a SEND Church

- Being the main resource for this planter
 - Financial
 - Prayer
 - Strategic
 - Otherwise
- Work closely with NAMB



EL ESPAÑOL SUMMIT

Cristian and Ashley's ability to speak fluent Spanish is a valuable resource.

- Overtime Cristian would become a fulltime employee, with additional responsibilities geared toward the Hispanic community.
- Creating programs, ministries and events
 - Cinco De May
 - ESL
 - Our new cleaning lady informed me that she was taught English by Francis Peggram



EL ESPAÑOL SUMMIT

Beginning to add second service for the Hispanic Speaking population in Wiggins and surrounding areas.

- Wiggins 32.1% Hispanic (Hispanic or Latino)
 - 23.6% of households only speak Spanish.
 - Roughly 802 individuals in Wiggins
- Morgan County
 - 39% Hispanic (Hispanic or Latino)
 - 23% households only speak Spanish
 - Roughly 11,515 individuals in Morgan County

Cristian would work closely with NAMB for training and residency.

- Potential stipend to help cover cost for 3-5 years to help with employment cost.

MISSIONARY GIVING AND ADDING MISSIONARIES

Increase our current giving by
300% over next 5 years

- Stephanie Moiser
- She has a Name
- AWANA Missionary

Add more missionaries we
support

- A Strong disciplined church is a more mission focused church.



STRONG MEN'S AND WOMEN'S MINISTRY

The men's and women's ministries should be the backbone of SBC.

The more involvement within these two ministries the more involvement all ministries experience.

Supporting and meeting the needs of the men and women in the church will create a stronger unifying church.

PROMOTION, PROMOTION, PROMOTION

We need to start with creating, events, speakers and other opportunities.



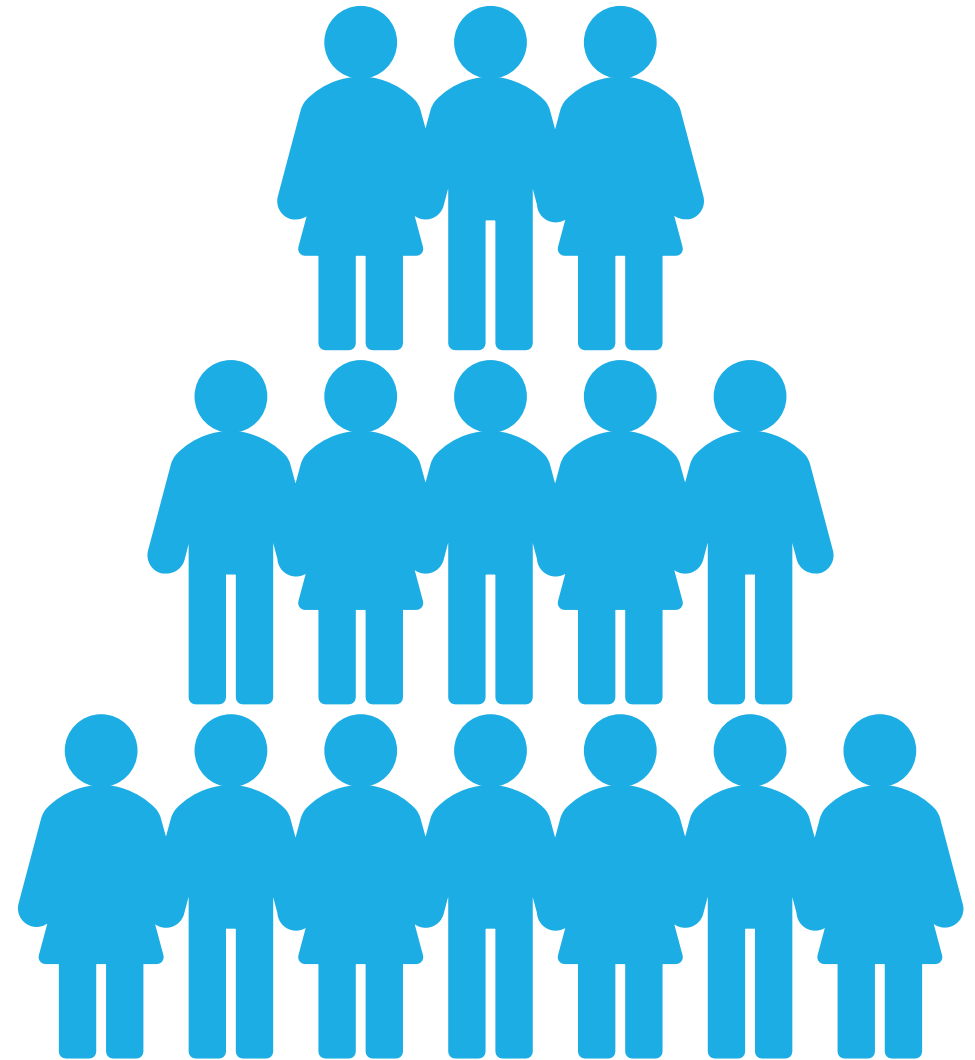
DEACON BODY DISCIPLESHIP

The deacons have been instructed to find an individual or two to disciple in 2025.

This process will be duplicated each year with new discipleship members.

Overtime, each receipted of discipleship will disciple others within the congregation.

Creating leaders for the future



CREATE STRONG PROMOTIONAL TEAM

The goal is to ensure all of SBC's ministries and events are promoted within our church and within our community.

How to accomplish this Goal?

1. Get 3-4 individuals that can utilize social media, flyers, videos and other methods to promote our church, ministries and events
2. These individuals will be tasked with receiving information from ministries and events. Evaluate event or ministry and make a plan to promote appropriately.





CREATE STRONG PROMOTIONAL TEAM

3. This group will be the most informed group of all church activities. They will promote what is provided to them. They will act on their own accord for promotions and will not need to seek approval for the church. AKA: Freedom to promote

4. This group can also be proactive in event or ministry promotions on regular events such as VBS, Insomnia, Fall Festival, Ext.

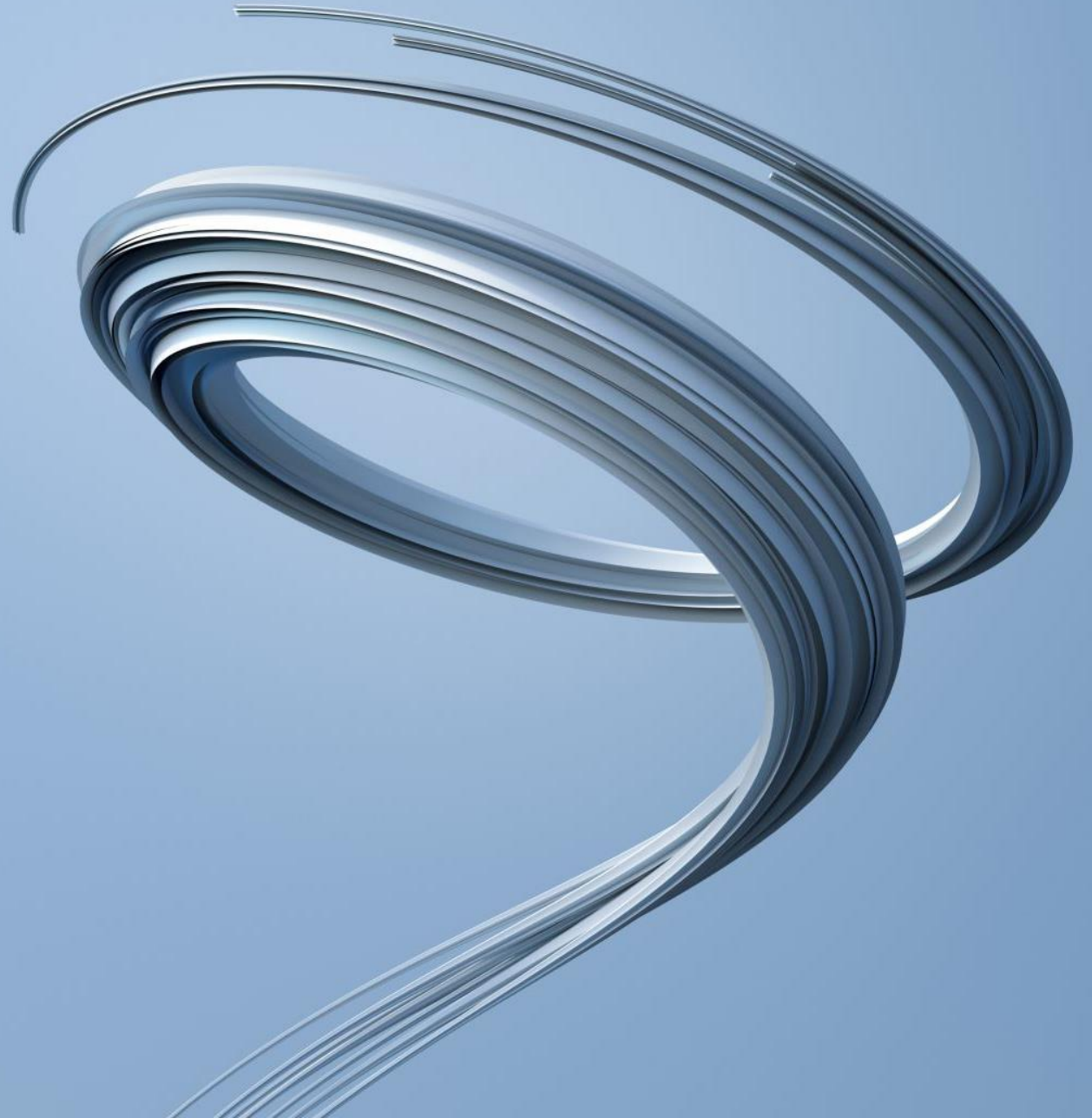
5. This group should always consider the promotion as a gospel opportunity. Promoting both the event and the meaning for the event is a gospel opportunity

PROJECT HELIX

Return to the Great Commission

Matthew 28:18-20

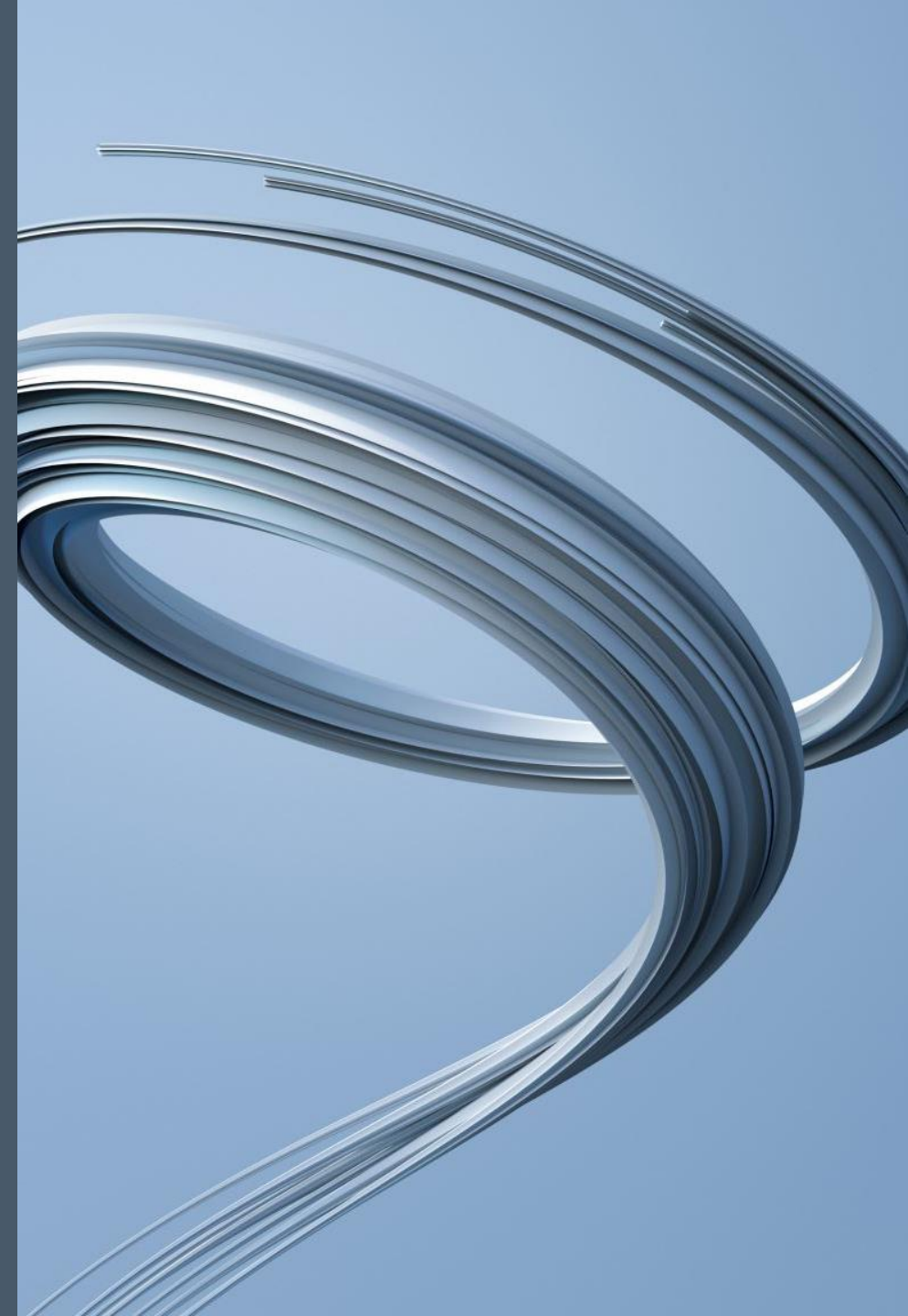
And Jesus came and said to them, “All authority in heaven and on earth has been given to me. Go therefore and make disciples of all nations, baptizing them in the name of the Father and of the Son and of the Holy Spirit, teaching them to observe all that I have commanded you. And behold, I am with you always, to the end of the age.”

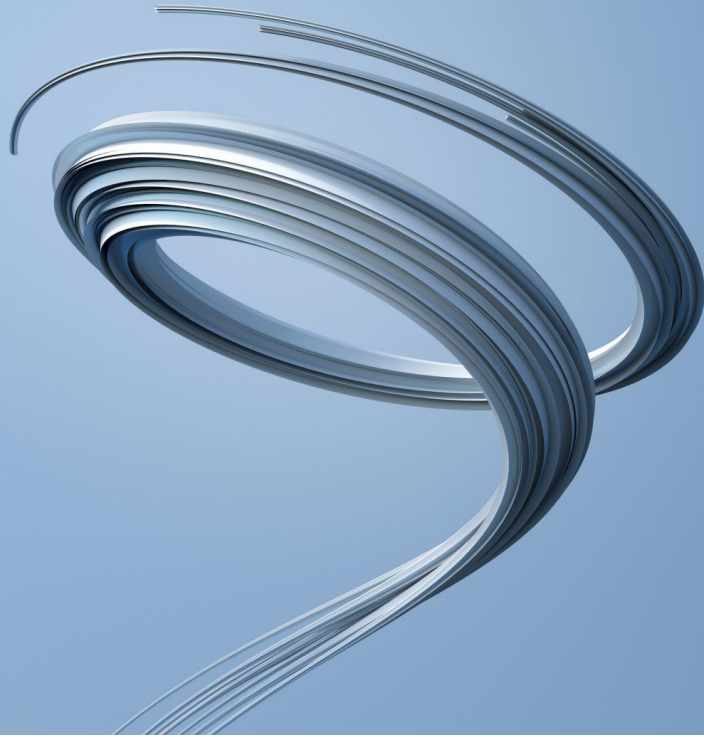


PROJECT HELIX

What does a return to the Great Commission mean for Summit?

1. This is not to suggest we haven't focused on it...rather a renewed focus to it.
2. Rather it is a re-engagement and focus on share the gospel of Jesus.
3. It is a strategy that starts at the home and spirals out from the home until we reach the ends of the earth.





PROJECT HELIX STRATEGY

1. Family Discipleship
2. Neighborhood evangelism
 - a. Door hangers
 - b. Evangelism events
3. Statewide support for the expansion of the gospel
 - a. Support Church plants (See other vision plans)
 - b. Involvement with state convention

PROJECT HELIX STRATEGY

4. Nationwide support for the expansion of the gospel
 - a. Find church plants or support within the US
 - b. Involvement in the national convention
 - c. National Mission Trips

5. Worldwide support for the expansion of the gospel.
 - a. Support missionaries abroad.
 - b. Have mission trips



